

CERTIFICATE OF LOCATION OF GOVERNMENT CORNER

NORTHEAST Corner of Section 12, Township 106, Range 39, 5TH P.M.

STATE OF MINNESOTA, County of MURRAY

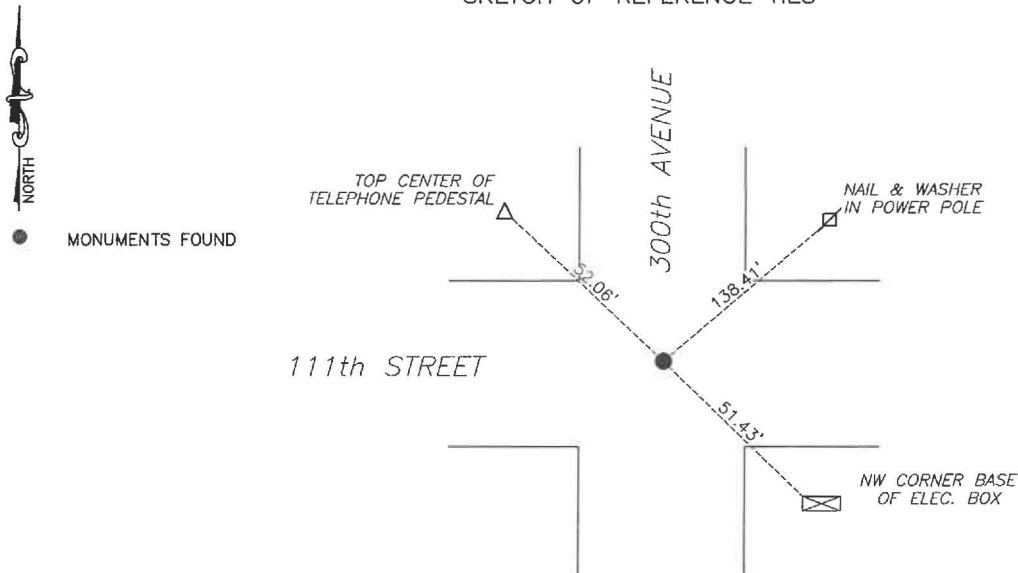
At the corner location shown on the sketch:

☒ On 6/28/2024 found a 1/2" iron with survey cap #12967
DATE

☒ left monument as found, ☐ lowered monument, ☐ removed monument (explain)

☐ On _____ placed a _____
DATE

SKETCH OF REFERENCE TIES



Murray County
Coordinate System NAD83 (1996)

N: 158260.169
E: 580069.316

WGS84
LAT: 44°00'26.8492"
LON: -95°27'44.5307"

Statement of evidence relative to this corner location is on back of page.

I hereby certify that this document and the data contained herein was prepared by me or under my direct supervision.

Daniel L. Buettel
Daniel L. Buettel
License No. 43844

3/12/2025
DATE

MAR 13 2025

Karen Bram

MURRAY COUNTY RECORDER

Statement of Evidence

NORTHEAST CORNER SECTION 12, T106N, R39W of the 5th P.M.

In September 1858 W.J. Neely surveyed the east township line.

In July of 1861 J.W. Myers surveyed the north, south, and west township lines.

In August of 1861 Wellman & Smoot subdivided the township.

June 22, 1899 a survey by J.W. Woolstencroft shows a 10"x12"x12" stone monument at the corner.

June 6, 1995 county records show a $\frac{1}{2}$ " iron monument with a survey cap above the stone at the corner.

June 28, 2024 Bueltel-Moseng Land Surveying searched the area and found a $\frac{1}{2}$ " iron with LS #12967, probed beside the iron and hit stone beneath. Accepted the monument as the corner.